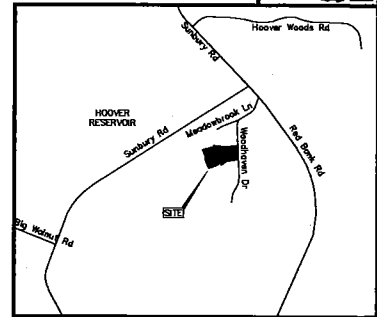


# PRELIMINARY PLAN

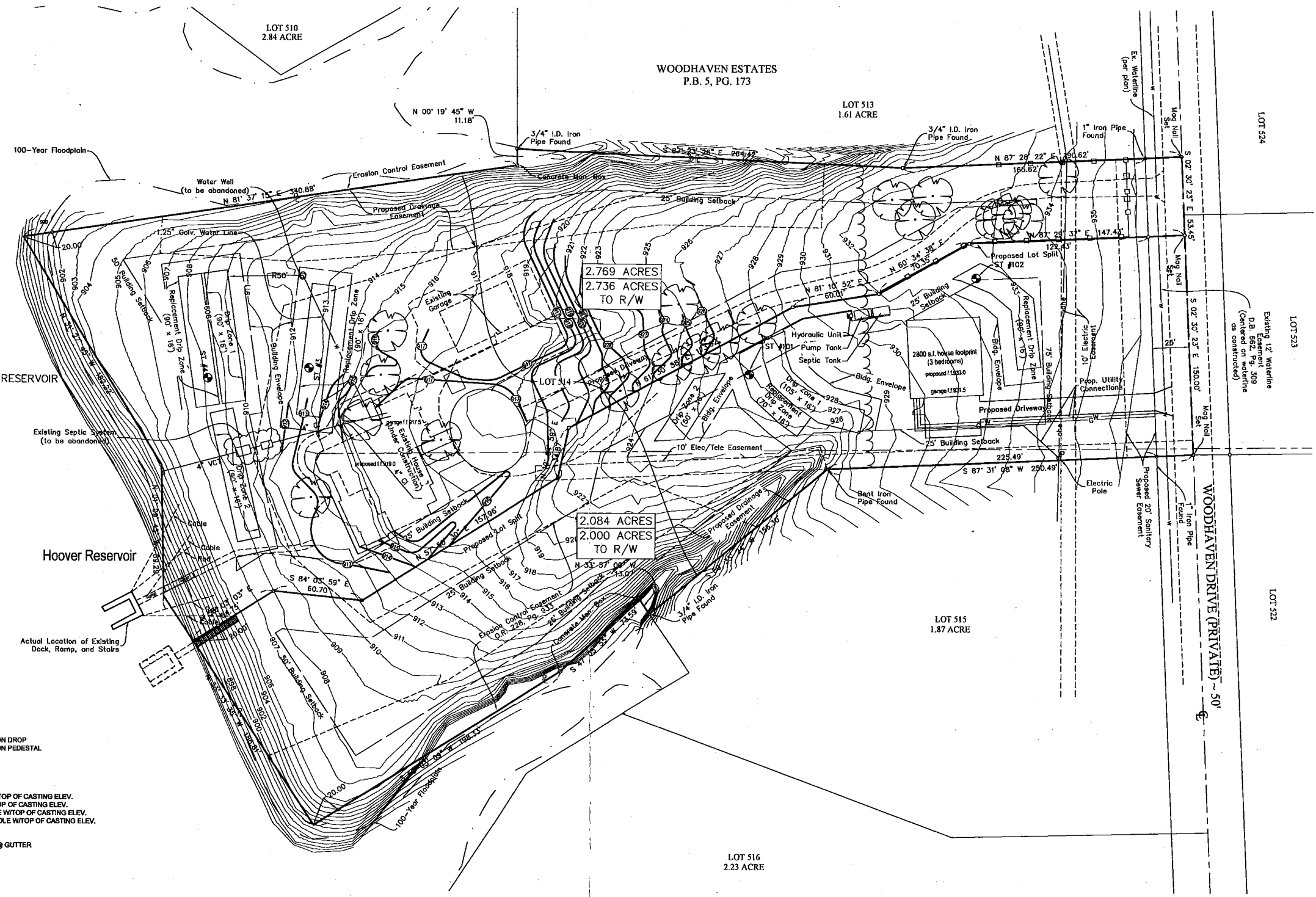
## RESUBDIVISION OF LOT NUMBER 514, WOODHAVEN ESTATES, P.B. 5, PG. 173

**RECEIVED**  
NOV 27 2017

Del. Co. Regional  
Planning Commission



- AmF - Amanda Silt Loam - 25 to 50 Percent Slopes
- CeB - Centerburg Silt Loam - 2 to 6 Percent Slopes
- BeB - Bennington Silt Loam - 2 to 4 Percent Slopes
- BeA - Bennington Silt Loam - 0 to 2 Percent Slopes
- 914 - Proposed Contour
- Soil Boring



### EXISTING SYMBOLS LEGEND

- |   |  |
|---|--|
| <ul style="list-style-type: none"> <li>Sign</li> <li>STREET SIGN</li> <li>AREA LIGHT</li> <li>YARD LIGHT</li> <li>LIGHT POLE</li> <li>LIGHT POLE W/SQR. BASE</li> <li>LIGHT POLE WRND. BASE</li> <li>ELECTRIC GUY</li> <li>ELECTRIC MARKER</li> <li>ELECTRIC TRANSFORMER</li> <li>ELECTRIC METER</li> <li>ELECTRIC DROP</li> <li>ELECTRIC PULL BOX</li> <li>ELECTRIC PEDESTAL</li> <li>ELECTRIC OUTLET</li> <li>TELEPHONE CLOSURE</li> <li>TELEPHONE DROP</li> <li>TELEPHONE PULL BOX</li> <li>TELEPHONE PEDESTAL</li> <li>TELEPHONE POLE</li> <li>UTILITY POLE</li> <li>PULL BOX</li> <li>TRAFFIC PULL BOX</li> <li>TRAFFIC CONTROL BOX</li> <li>TRAFFIC SIGNAL</li> <li>TRAFFIC POLE</li> <li>TRAFFIC POLE W/ WALK SPRINKLER</li> <li>WATER VALVE</li> <li>FIRE HYDRANT</li> <li>WATER METER</li> <li>WATER SERVICE</li> <li>WATER CONTROL VALVE</li> <li>IRRIGATION CONTROL VALVE</li> </ul> | <ul style="list-style-type: none"> <li>CABLE TELEVISION DROP</li> <li>CABLE TELEVISION PEDESTAL</li> <li>GAS VALVE</li> <li>GAS SERVICE</li> <li>GAS METER</li> <li>GAS MARKER</li> <li>CLEAN OUT</li> <li>CATCH BASIN W/TOP OF CASTING ELEV.</li> <li>CURB INLET W/TOP OF CASTING ELEV.</li> <li>STORM MANHOLE W/TOP OF CASTING ELEV.</li> <li>SANITARY MANHOLE W/TOP OF CASTING ELEV.</li> <li>DOWN SPOUT</li> <li>ROOF DRAIN</li> <li>EXISTING ELEV. @ GUTTER</li> <li>SPOT ELEV.</li> <li>BOLLARD</li> <li>WOOD POST</li> <li>METAL POST</li> <li>MAIL BOX</li> <li>FLAGPOLE</li> <li>EXISTING GAS LINE</li> <li>EXISTING WATER LINE</li> <li>EXISTING UNDERGROUND ELECTRIC LINE</li> <li>EXISTING OVERHEAD ELECTRIC LINE</li> <li>EXISTING UNDERGROUND TELEPHONE LINE</li> <li>EXISTING OVERHEAD TELEPHONE LINE</li> <li>EXISTING OVERHEAD CABLE TELEVISION LINE</li> <li>EXISTING UNDERGROUND CABLE TELEVISION LINE</li> <li>EXISTING INDEX CONTOUR</li> <li>EXISTING INTERMEDIATE CONTOUR</li> <li>EXISTING FENCE LINE</li> </ul> |
|---|--|

Floodplain information shown is based on panel 286 of 295 on FEMA rate map number 39041C0286K, Revised April 16, 2009.

Property is currently zoned "Rural Residential District (RR)" per Genoa Township Zoning Map.

The proposed STS on these lots do not violate 3701-29 of the Ohio Administrative Code.

A designed sewage treatment system plan will be required prior to permitting.

Owners, their successors, heirs or assigns, of herein delineated lots agree when a central sanitary sewer system becomes available lots shall connect to it. Acceptance of title to a lot in this subdivision shall constitute waiver of future notice or hearing on this requirement.

Clear cutting may be required

Soil testing was performed by Soil and Environmental Consulting Services, Inc. on June 21, 2017.

Both houses are to be 3 bedrooms.

