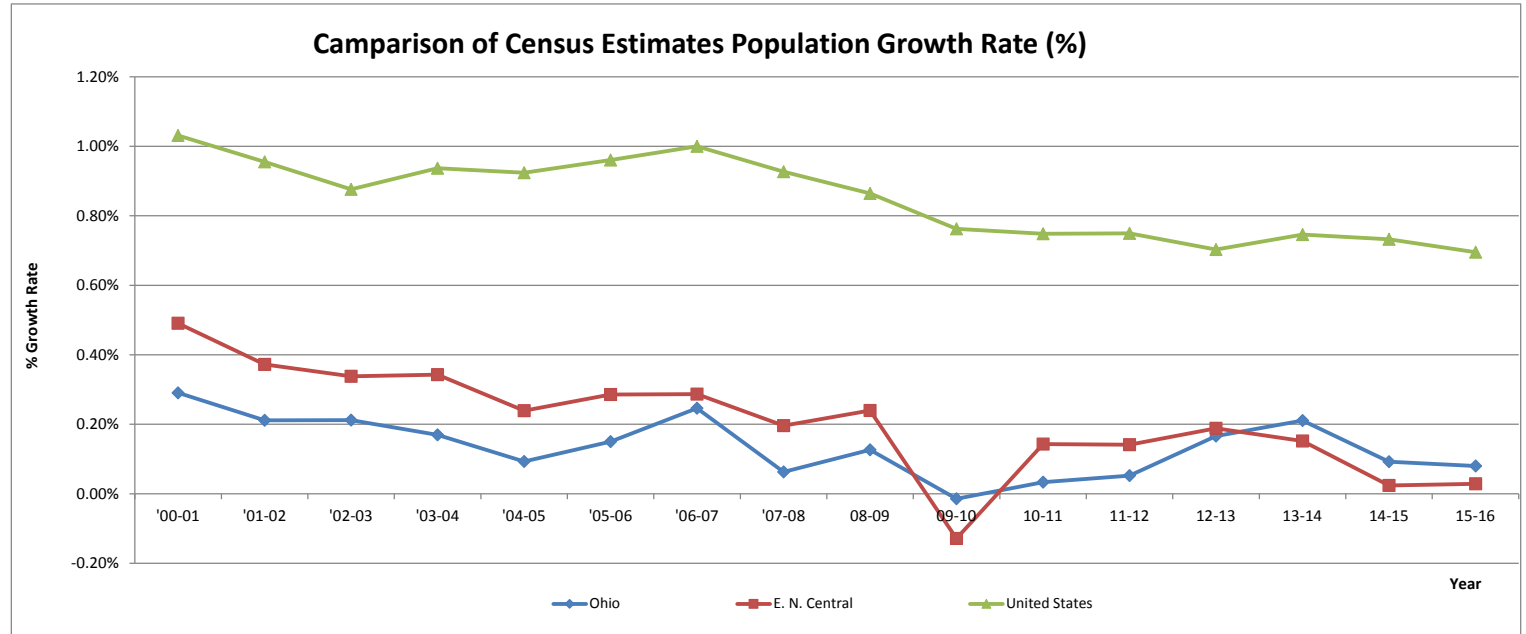


Population from 2000 to 2016

(Based on U.S. Census Bureau Population Estimates)



Population Information in Central Ohio

(Data source: U.S. Census Bureau Population Estimates)

Area Name		7/1/2000	7/1/2001	7/1/2002	7/1/2003	7/1/2004	7/1/2005	7/1/2006	7/1/2007	7/1/2008	7/1/2009	7/1/2010	7/1/2011	7/1/2012	7/1/2013	7/1/2014	7/1/2015	7/1/2016
Ohio	# of Pop.	11,363,844	11,396,874	11,420,981	11,445,180	11,464,593	11,475,262	11,492,495	11,520,815	11,528,072	11,542,645	11,540,983	11,544,824	11,550,839	11,570,022	11,594,408	11,605,090	11,614,373
	Incre. Pop.		33,030	24,107	24,199	19,413	10,669	17,233	28,320	7,257	14,573	-1,662	3,841	6,015	19,183	24,386	10,682	9,283
	Growth R.		0.29%	0.21%	0.21%	0.17%	0.09%	0.15%	0.25%	0.06%	0.13%	-0.01%	0.03%	0.05%	0.17%	0.21%	0.09%	0.08%
E. N. Central	# of Pop.	45,222,700	45,444,536	45,613,750	45,768,097	45,925,032	46,034,831	46,166,324	46,298,763	46,389,431	46,500,668	46,440,847	46,507,169	46,572,795	46,660,465	46,731,329	46,742,511	46,755,973
	Incre. Pop.		221,836	169,214	154,347	156,935	109,799	131,493	132,439	90,668	111,237	-59,821	66,322	65,626	87,670	70,864	11,182	13,462
	Growth R.		0.49%	0.37%	0.34%	0.34%	0.24%	0.29%	0.29%	0.20%	0.24%	-0.13%	0.14%	0.14%	0.19%	0.15%	0.02%	0.03%
United States	# of Pop.	282,171,957	285,081,556	287,803,914	290,326,418	293,045,739	295,753,151	298,593,212	301,579,895	304,374,846	307,006,550	309,348,193	311,663,358	313,998,379	316,204,908	318,563,456	320,896,618	323,127,513
	Incre. Pop.		2,909,599	2,722,358	2,522,504	2,719,321	2,707,412	2,840,061	2,986,683	2,794,951	2,631,704	2,341,643	2,315,165	2,335,021	2,206,529	2,358,548	2,333,162	2,230,895
	Growth R.		1.03%	0.95%	0.88%	0.94%	0.92%	0.96%	1.00%	0.93%	0.86%	0.76%	0.75%	0.75%	0.70%	0.75%	0.73%	0.70%