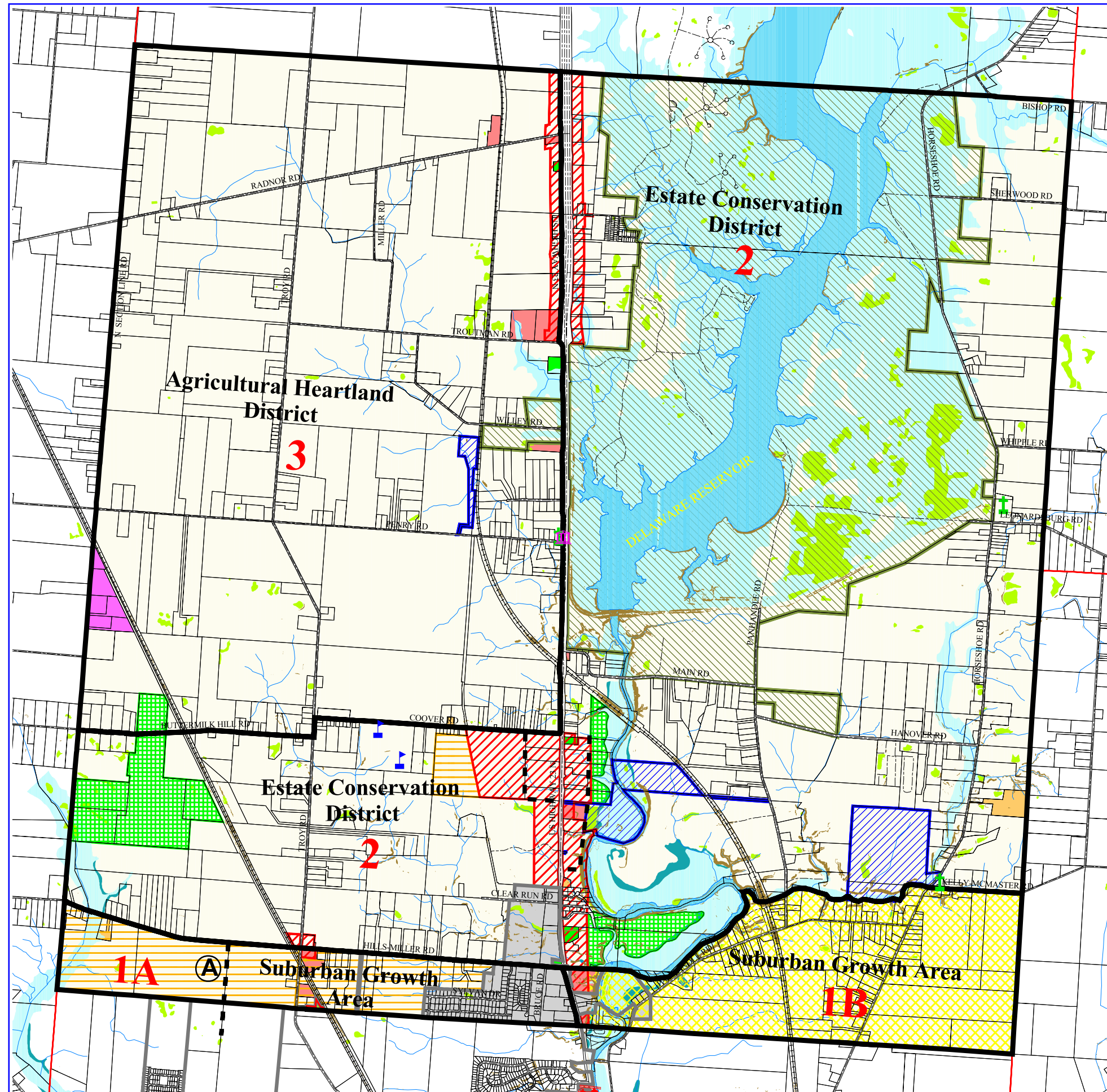
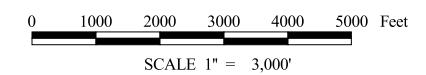


TROY TOWNSHIP COMPREHENSIVE LAND USE PLAN

Adopted 2003
Amended December 2006



- Township Hall
- Fire Department
- Cemeteries
- Schools
- Planning Subareas
- Township Boundaries
- Incorp. Area Boundaries
- Road Centerlines
- Road Right of Way
- Railroad
- Property Lines
- Proposed Roads
- Slope > 20%
- Rivers/Ponds/Lakes
- Streams
- Wetland (NWI)
- 500-Year Flood Plain
- 100-Year Flood Plain
- Government Lands
- Delaware City Owned Land
- Proposed Land Use**
- Single Family Residential at 1 du/2acres
- Single Family Residential at 1 du/2acres without centralized sewer or 1.25 du/acre with centralized sewer
- Single Family Residential at 1 du/2acres without centralized sewer or 2 du/acre with centralized sewer
- Potential Township Park / Preservation Area
- Planned Commercial and Office (PCD)
- Planned Industrial
- Troy Township Zoning**
- Farm Residential District (FR-1)
- Planned Residential District (PRD)
- Planned Commercial and Office District (PCD)
- Planned Industrial District (PID)
- City of Delaware
- Non-Conforming Use
- Highway Service District
- River
- Road



Prepared by: Delaware County Regional Planning Commission (740-833-2260)
<http://www.dcrpc.org>
 Original Data Provided by The Delaware County Auditor's Office DALIS Project
 (Topo, Parcel, ROW, Municipal Boundary, Road Centerlines, Hydrology,
 Township Boundary, Floodplains) (740-833-2070);
 (Printed 1/5/2007)