

ZONING DISTRICT MAP

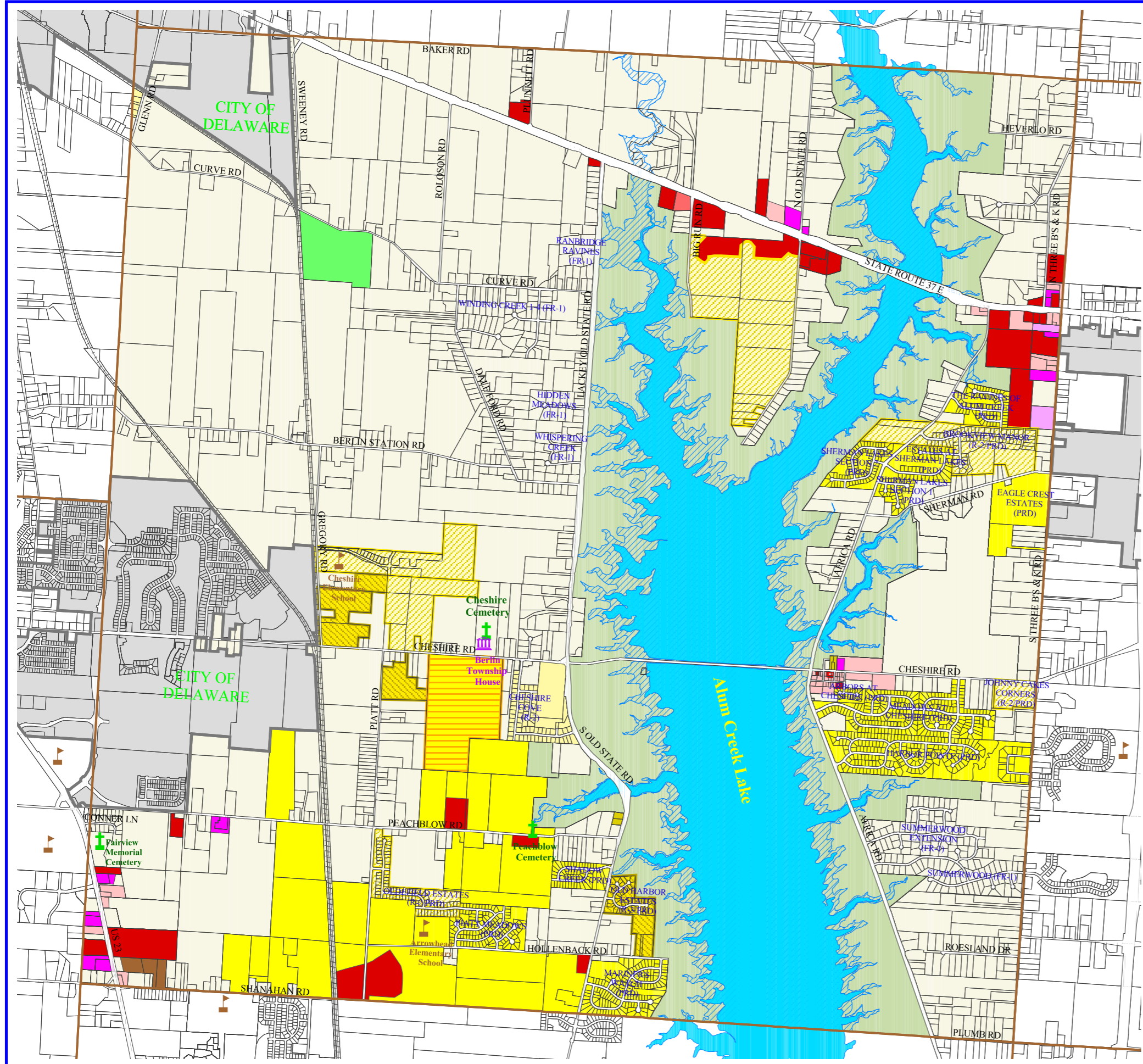
Berlin Township Delaware County, Ohio

This is the official zoning district map of Berlin Township, Delaware County, Ohio, duly adopted by the trustees of Berlin Township in Resolution on

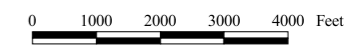
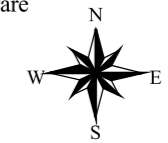
Official map as amended December 28, 2016

Board of Township Trustees

Zoning Inspector
Berlin Township, Delaware County, Ohio



- Township Hall
- Cemeteries
- Existing Schools
- Township Boundary
- Incorporated Area
- Railroad
- Road Right of Way
- Property Lines
- Incorporated Area
- Berlin Township Zoning**
 - Farm Residential District (FR-1)
 - Low Density Residential District (R-2)
 - R-2 with PRD Overlay (R-2/PRD)
 - Multi-Type Residential District (R-3)
 - R-3 with PRD Overlay (R-3/PRD)
 - Multi-Type Residential District (R-4)
 - R-4 with PRD Overlay (R-4/PRD)
 - Planned Residential District (PRD)
 - Neighborhood Commercial District (NCD)
 - Transitional Planned Unit Development (TPUD)
 - Planned Age-Restricted Residential District (PARRD)
 - Planned Office District (POD)
 - Planned Commercial and Office District (PCD)
 - Old Cheshire Planned Unit Development District (OCPUD)
 - OCPUD Overlay Applied
 - Industrial District (ID)
 - Planned Industrial District (PID)
 - Agricultural Conservation District (A-1)
 - Floodplain Regulatory District (FPRD)
 - US Land
 - River
 - City of Delaware



Scale: 1" = 3,000'

Prepared By: Delaware County Regional Planning Commission (740-833-2260) www.dcrpc.org
Parcel information provided by The Delaware County Auditor's Office.
Further information is available by contacting the Auditor's GIS office (740-833-2070)
Zoning Information provided by Berlin Township (740-548-5217)
(Printed 4/20/2017)