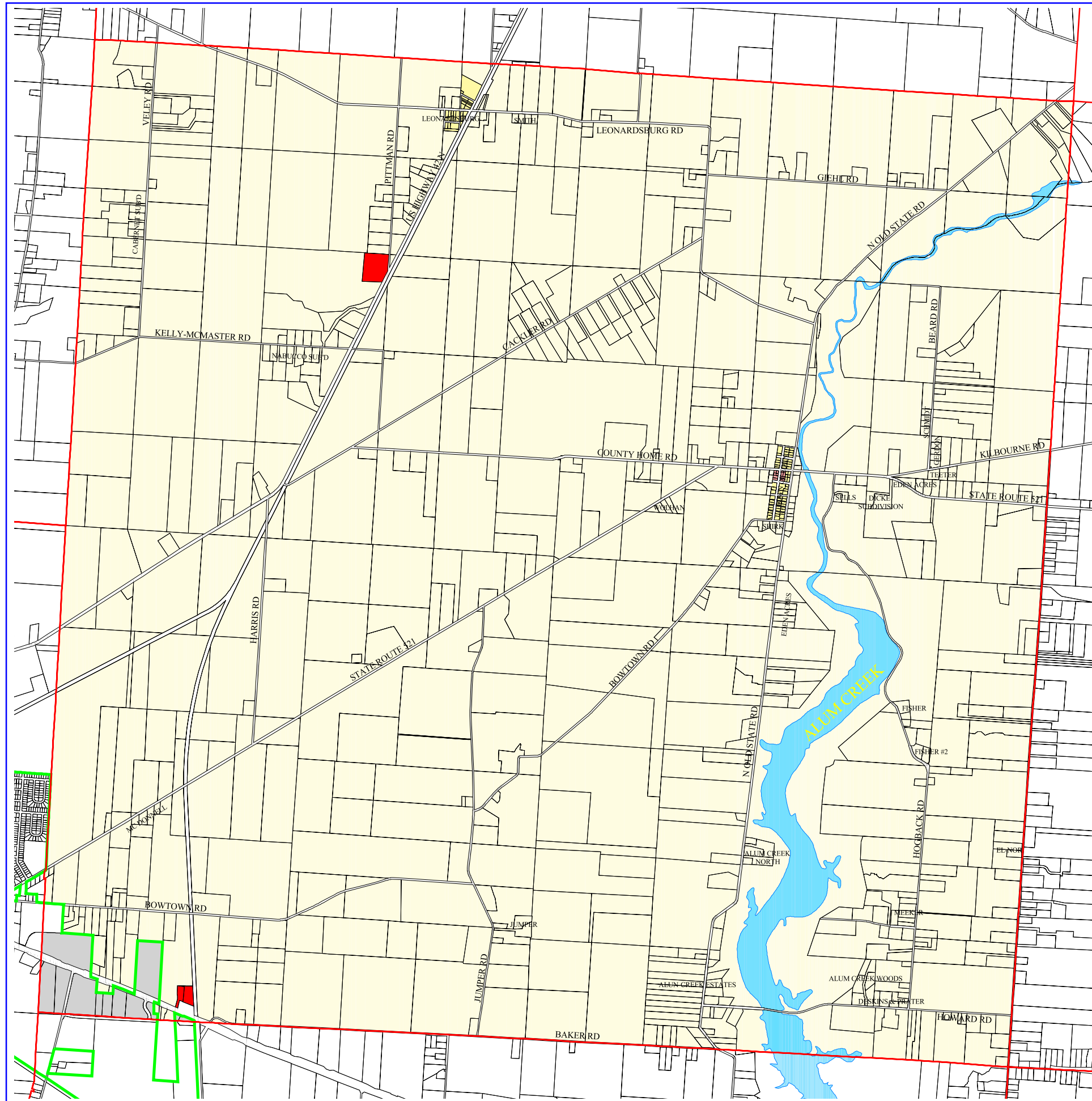
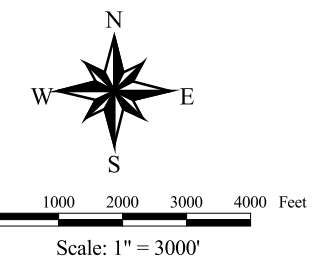


ZONING DISTRICT MAP

**Brown Township
Delaware County, Ohio**



- Township Boundary
- Incorporated Areas
- Road Right of Way
- Property Lines
- Brown Township Zoning**
- Farm Residence District (FR-1)
- Low Density Residential District (R-2)
- Medium Density Residential District (R-3)
- Planned Residential District (PRD)
- Neighborhood Office District (C-1)
- Neighborhood Commercial District (C-2)
- Planned Commercial and Office District (PC)
- Industrial District (I)
- Planned Industrial District (PI)
- Agricultural Preservation District (A-1)
- City of Delaware
- River
- Road



Prepared By: Delaware County Regional Planning Commission (740-833-2260)
<http://www.dcrpc.org>
 Parcel Information Provided by The Delaware County Auditor's Office DALIS Project
 Further Information is available by contacting the DALIS Project Office (740-833-2070)
 Zoning Information from the Brown Township (740-363-4222)
 (Printed 11/17/2006)