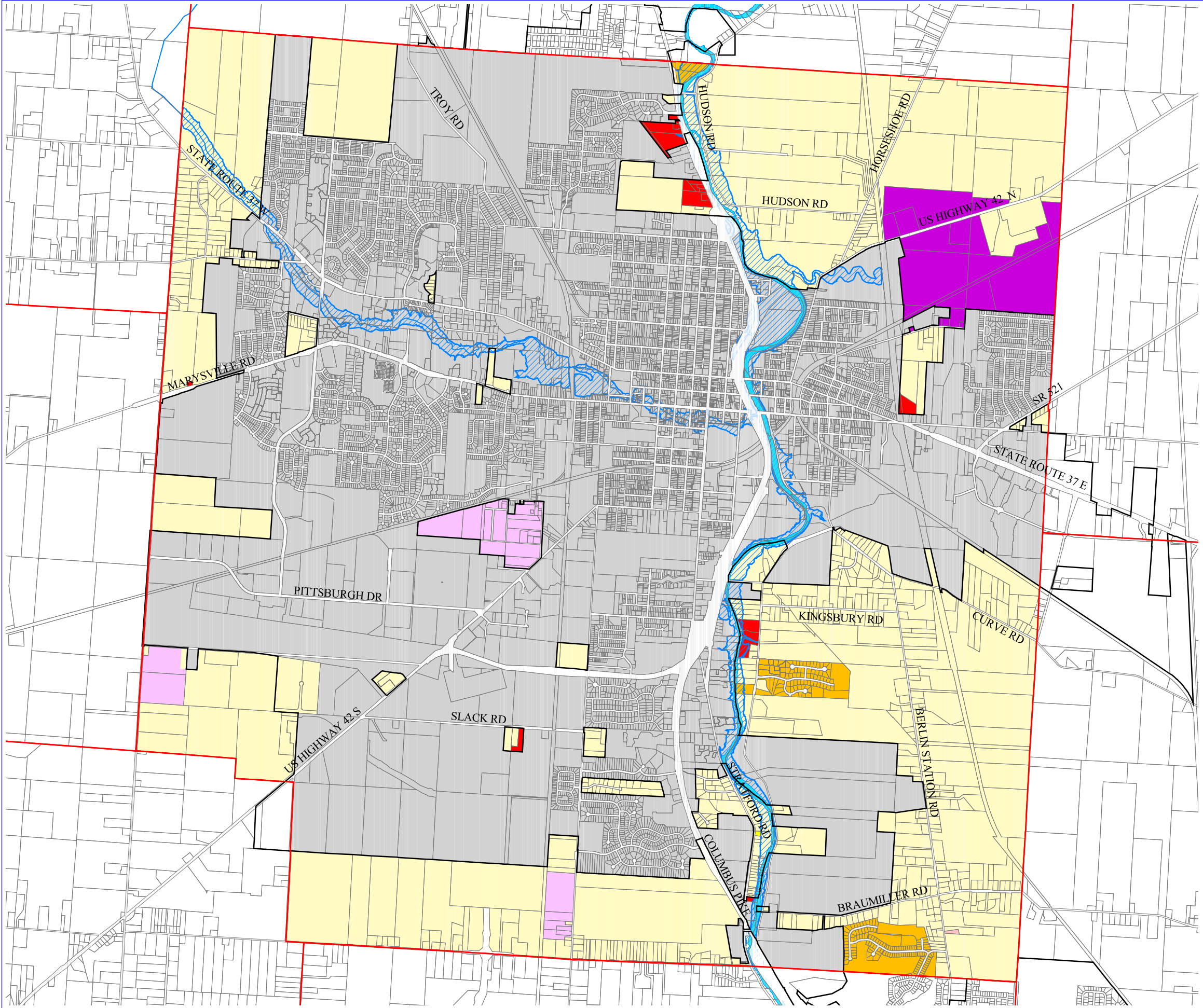
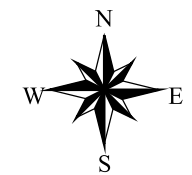


# ZONING DISTRICT MAP

Delaware Township,  
Delaware County, Ohio



- Township Boundary
- Incorporated Boundary
- Road Right of Way
- Property Lines
- Rivers / Lakes
- Delaware Township Zoning**
- Farm Residential District (FR-1)
- Low Density Residential District (R-2)
- Planned Residential District (PRD)
- Neighborhood Commercial and Office District (C-1)
- Planned Commercial and Office District (PCD)
- Industrial District (I)
- Planned Industrial District (PID)
- Floodplain Regulatory District (FPRD)
- City of Delaware
- Historic Residence District (HRD)



0 1000 2000 3000 4000 5000 6000 Feet

Prepared By: Delaware County Regional Planning Commission (740-833-2260)  
<http://www.dcrpc.org>  
 Parcel Information Provided by The Delaware County Auditor's Office DALIS Project  
 Further Information is available by contacting the DALIS Project Office (740-822-2070)  
 Zoning Information from the Delaware Township (740-369-7872)  
 Updated: 1/20/2016